

Rochester Regional Health

RocScholar

Rochester Regional Health authored publications and proceedings

6-1-2009

RRH Library Newsletter, June 2009

Libraries at Rochester Regional Health

Follow this and additional works at: <https://scholar.rochesterregional.org/rrhpubs>



Part of the [Health Sciences and Medical Librarianship Commons](#)

Recommended Citation

Libraries at Rochester Regional Health. (2009). RRH Library Newsletter, June 2009. *LibraLinks* Retrieved from <https://scholar.rochesterregional.org/rrhpubs/789>

This Newsletter is brought to you for free and open access by RocScholar. It has been accepted for inclusion in Rochester Regional Health authored publications and proceedings by an authorized administrator of RocScholar. For more information, please contact Lisa.Buda@rochesterregional.org.



Rochester General Hospital Edition

JUNE 2009

A New Influenza Virus

Novel Influenza A (H1N1) of swine origin is a new flu virus that was first detected in April, 2009. It appears that the virus is spreading from person to person and cases are confirmed in the US and several other countries. Because this is a new virus and most people do not have immunity to it, this virus may potentially be more serious and pose a greater healthcare concern. At this time however, it's difficult to predict how serious or widespread this new virus will be. For the most current information go to CDC's <http://www.cdc.gov/h1n1flu/>. If you would like copies of any of these articles, or if you would like further information on this topic, please contact any library staff member.

"Swine influenza: frequently asked questions." *Weekly Epidemiologic Record*, 84(18):149-51, 2009 May 1.

Butler D., "Swine flu goes global." *Nature*, 458(7242):1082-3, 2009 Apr 30.

Charatan F., "UN warns that swine flu outbreak could turn into pandemic." *BMJ*, 338:b1751, 2009. [Epub ahead of print].

Centers for Disease Control and Prevention (CDC), "Update: drug susceptibility of swine-origin influenza A (H1N1) viruses, April 2009." *MMWR Morbidity & Mortality Weekly Report*, 58(16):433-5, 2009 May 1.

Centers for Disease Control and Prevention (CDC), "Update: infections with a swine-origin influenza A (H1N1) virus--United States and other countries, April 28, 2009." *MMWR Morbidity & Mortality Weekly Report*, 58(16):431-3, 2009 May 1.

Cohen J., "Swine flu outbreak. Past pandemics provide mixed clues to H1N1's next moves." *Science*, 324(5930):996-7, 2009 May 22.

Cohen J. Enserink M., "Infectious diseases. As swine flu circles globe, scientists grapple with basic questions." *Science*, 324(5927):572-3, 2009 May 1.

Gallaher WR., "Towards a sane and rational approach to management of Influenza H1N1 2009." *Virology Journal*, 6(1):51, 2009 May 7.

Naffakh N. van der Werf S., "April 2009: An outbreak of swine-origin influenza A(H1N1) virus with evidence for human-to-human transmission." *Microbes & Infection*, 2009 May 12. [Epub ahead of print].

Novel Swine-Origin Influenza A (H1N1) Virus Investigation Team., "Emergence of a Novel Swine-Origin Influenza A (H1N1) Virus in Humans." *New England Journal of Medicine*, May 7, 2009 (10.1056/NEJMoa0903810). [Epub ahead of print].

Watson R., "Swine flu could come back in more virulent form after summer, European experts say." *BMJ*, 338:b1792, 2009. [Epub ahead of print].

Wiwanitkit V., "Obstetrical concern on new emerging swine flu." *Archives of Gynecology & Obstetrics*, 2009 May 24. [Epub ahead of print].

WERNER HEALTH SCIENCES LIBRARY

585-922-4743 Voice

585-544-1504 Fax

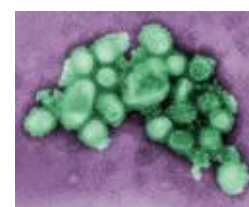
wellness@viahealth.org

We can be reached 24 hours a day by e-mail or voice mail



JUNE 2009 LIBRARY HOURS

- ❖ **Mon -Fri 8 AM – 9 PM**
- ❖ **Sat 8:30 AM – 5 PM**
- ❖ **Sun 12 NOON – 5 PM**



Our June book sale has begun. Books are \$1; tapes are 50¢.

CYBERTOOLS

Werner Library's online catalog:

<http://maple.cybertoolsforlibraries.com/cgi-bin/CyberHTML?GHRNYHO>

