

Rochester Regional Health

RocScholar

Nursing Research and EBP Day 2022

Nursing Research and EBP

9-30-2022

Evidence-Based Practice Liaisons: Supporting EBP Across the Health System

Tami A. Hartzell

Rochester Regional Health, tami.hartzell@rochesterregional.org

Susan Stell

Rochester Regional Health, Susan.Stell@rochesterregional.org

Follow this and additional works at: <https://scholar.rochesterregional.org/nursingresearchday>



Part of the [Health Sciences and Medical Librarianship Commons](#), [Medical Education Commons](#), and the [Nursing Commons](#)

Recommended Citation

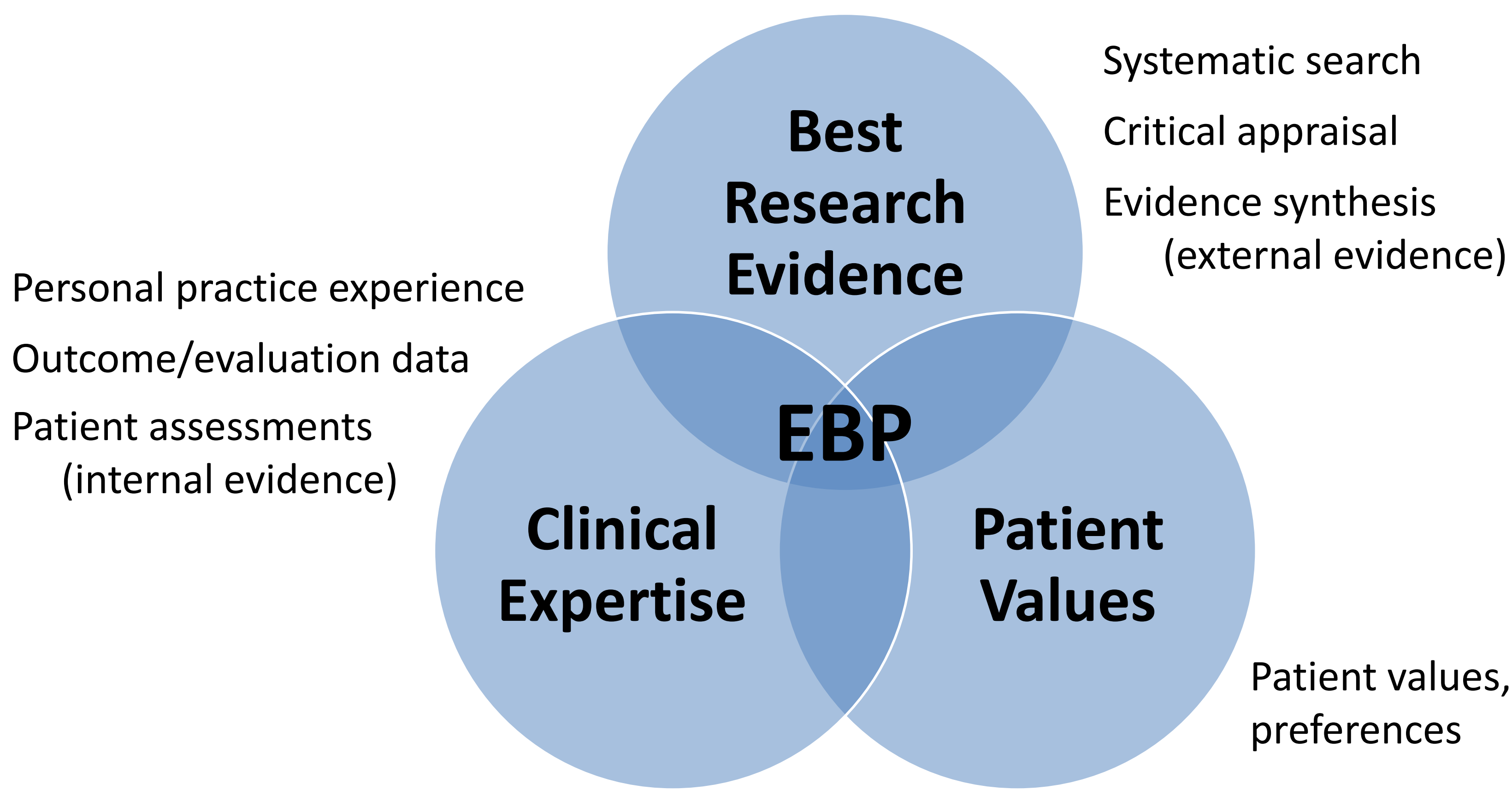
Hartzell, Tami A. and Stell, Susan, "Evidence-Based Practice Liaisons: Supporting EBP Across the Health System" (2022). *Nursing Research and EBP Day 2022*. 1.

<https://scholar.rochesterregional.org/nursingresearchday/1>

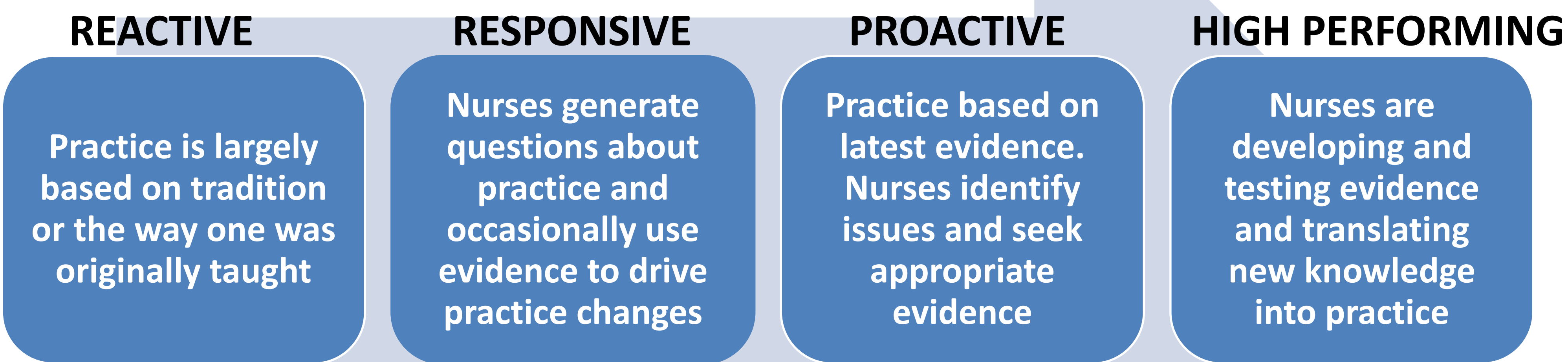
This Poster is brought to you for free and open access by the Nursing Research and EBP at RocScholar. It has been accepted for inclusion in Nursing Research and EBP Day 2022 by an authorized administrator of RocScholar. For more information, please contact Lisa.Buda@rochesterregional.org.

Evidence-Based Practice Liaisons: Supporting EBP Across the Health System

What is Evidence-Based Practice?



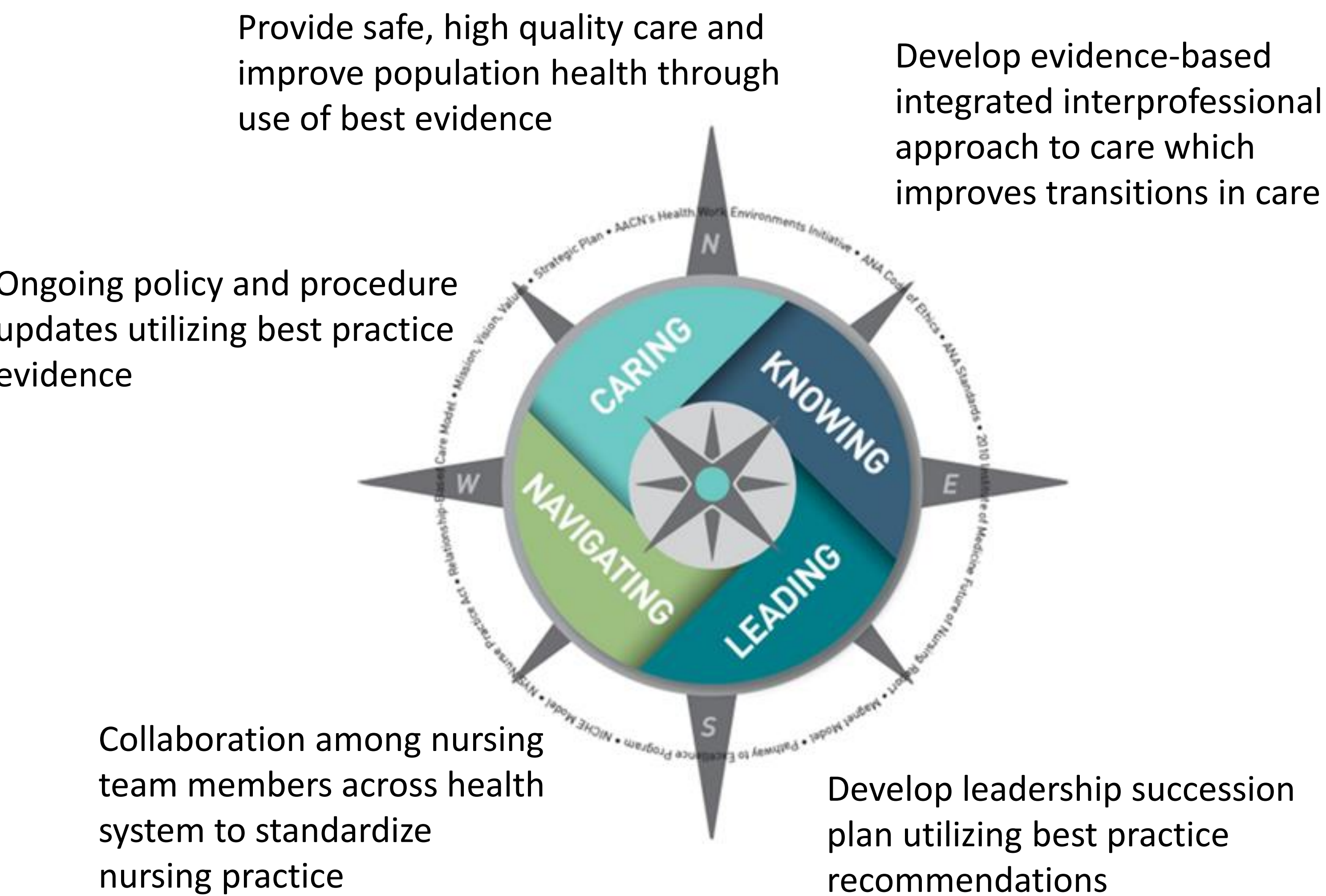
EBP Developmental Levels



RRH initiatives and accomplishments indicate movement across the EBP developmental levels from a reactive to high performing EBP culture

Wolf (2014)

RRH Professional Practice Model & Nursing Strategic Plan Supports EBP



Benefits of EBP

Decrease costs while improving patient care by:

- Decreasing admissions and length of stay
- Improving patient outcomes

Targets Triple Aim

- Improving patient experience of care (quality & satisfaction)
- Improving the health of populations
- Reducing per capita cost of health

IHI, 2017

Current State, Future Recommendations

“By the year 2020, 90% of clinical decisions will be supported by accurate, timely, and up-to-date clinical information, and will reflect the best available evidence.”

IOM, 2009

“... recommendations for primary care practice . . . only 18% are based on patient-oriented evidence from consistent, high-quality studies.

Ebell, 2017

2020-2022 EBP Initiatives & Accomplishments

Nursing Journal Club survey distributed to nurses across RRH. Results revealed 41% of respondents were definitely interested in a journal club. 55% of respondents reported they were highly likely to participate in a virtual journal club. Virtual journal club planning is now underway.

EBP Website created on the RRH portal. It may be accessed by staff members across RRH. Designed to increase knowledge of EBP and offer tools to implement EBP in clinical practice.

EBP Educational Modules based on the AJN evidence-based practice series were created. There are 5 modules offering a total of 14 CNEs. The modules are available on HealthStream Learning.

Critical Appraisal approach piloted amongst committee. The approach can be used by teams completing EBP, QI or research projects. The approach could be used for group CRU sessions.

EBP Newsletter, *Asking is the Answer*, continued publication despite Covid. The newsletter is designed to increase knowledge and raise awareness of evidence-based practice among nursing staff.

Education of EBP Liaisons involving a series of 8 hour long presentations were offered to all Liaisons to assist in EBP mentoring. CNEs were also offered.

EBP Mentorship supplied by EBP Liaisons to new nurses enrolled in the Nurse Residency Program.

Anatomy of a CRU Form developed by committee members to help nurses complete their CRU form. It went live in November, 2020, during the height of CRU form activity.

EBP Liaisons transitioned from a hospital committee to a system-wide Council.

References

- Ebell MH, Sokol R, Lee A, et al. (2017). How good is the evidence to support primary care practice? *BMJ Evidence-Based Medicine*; 22, 88-92.
- Institute for Healthcare Improvement. (2017) IHI triple aim initiative: Better care for individuals, better health for populations, and lower per capita costs. Retrieved from <http://www.ihi.org/Engage/Initiatives/TripleAim/Pages/default.aspx>
- Institute of Medicine (US) Roundtable on Evidence-Based Medicine. Leadership Commitments to Improve Value in Healthcare: Finding Common Ground: Workshop Summary. Washington (DC): National Academies Press (US); 2009. Preface. Retrieved from <https://www.ncbi.nlm.nih.gov/books/NBK52851/?report=reader>
- Wolf, G.; Finlayson, S.; Hayden, M.; Hoolahan, S. & Mazzocchi, A. (2014). The developmental levels in achieving Magnet designation, Part 1. *Journal of Nursing Administration*, 44(3) 36-141.

Evidence-Based Practice Liaison Council

Tami A. Hartzell, MLS, Evidence-Based Practice (CH)
Susan Stell, MSN, RN, CCRN

ROCHESTER
REGIONAL HEALTH